

JHS

Joseph Hamilton Seaton

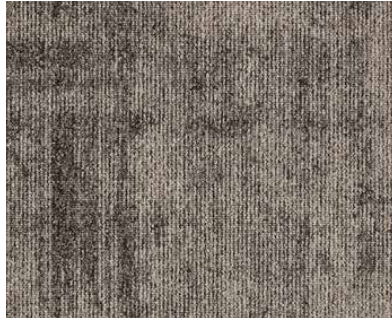
Overlay Tile

The Overlay Tile carpet is 50cm x 50cm and is made from a 100% solution dyed nylon 6 composition. It has a 70% post – industrial recycled backing, making it hard-wearing and sustainable. Nylon is one of the most popular synthetic fibres for carpet as the non-absorbent properties of nylon means stains shouldn't soak in. Solution-dyed nylon carpet is a pre-dyeing process. Prior to the yarn being produced, the fibre is dyed with molten nylon polymer, allowing the colour to permanently stay in the fibre. The loop pile construction of this carpet adds texture and creates a stylish appearance whilst remaining durable and well-suited to use in high traffic commercial areas. Available in 11 colours, this loop pile carpet tile range has something to suit an array of commercial interior spaces.

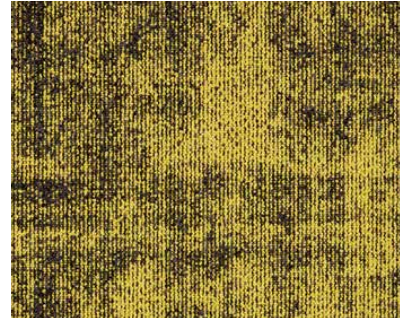




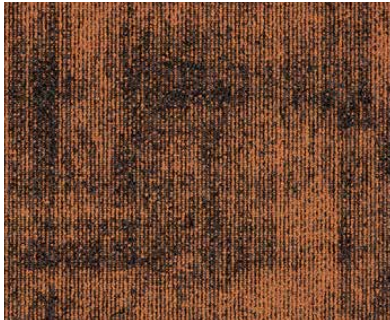
061 Cream



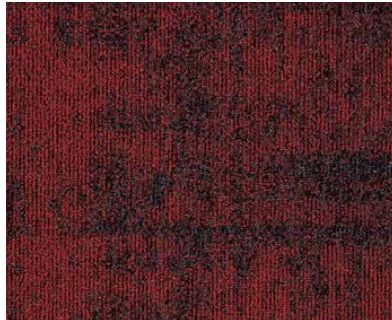
140 Shadow



210 Dandelion



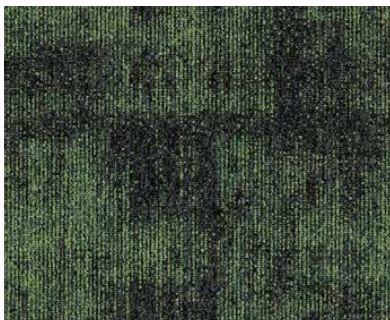
322 Amber



329 Scarlett



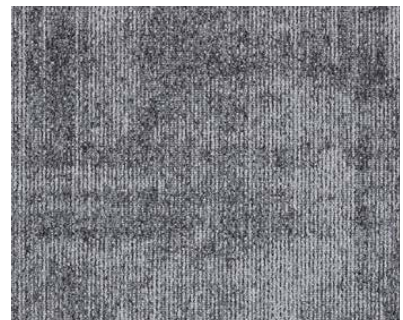
573 Sapphire



625 Eden



914 Pearl



957 Fossil



965 Dove



995 Anthracite

JHS

Joseph Hamilton Seaton

Overlay Tile

Construction	Tufted 1/10" Loop	
Pile Content	100% solution dyed nylon 6	
Secondary Backing	back2back standard carpet tile backing with 70% post-industrial recycled content	
Pile Height	2.9mm	
Total Height	6.5mm	
Total Weight	4500g/m ²	
Size	50 x 50cm	
Wear Classification	EN 1307	33
Luxury Classification	EN 1307	LC2
Stitch Count	202,000m ²	
Fire Classification	ISO 13501-1	Bfl-s1



JOSEPH HAMILTON SEATON

Relay Park, Relay Drive, Tamworth, Staffordshire. B77 5PR

Tel: 01827 831 400 | Email: sales@jhscarpets.com | www.jhscarpets.co.uk